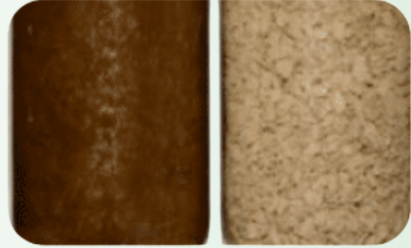


SASMIST™ 344

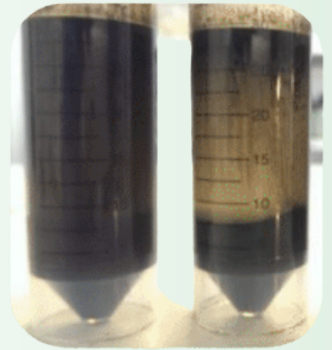
USE IN:

- Oil Slops & Sludge treatment
- Drill cuttings cleaning
- Fully mobile
- Refinery waste & sludge
- Production waste & sludge



PRODUCT DESCRIPTION:

The **MIST 344** system is a complete mobile oil waste treatment facility fully integrated within a single 40' container and is capable of treating both solid waste and liquid waste. Solid waste includes drill cuttings, oil sand, heavy oil sludge, and typical liquid waste such as oil slops, oil-based mud waste, decommissioning waste, well washings, refinery waste, etc. The **MIST 344**, therefore, has the capability to treat any type of oily waste irrespective of the solids, water, or oil content.



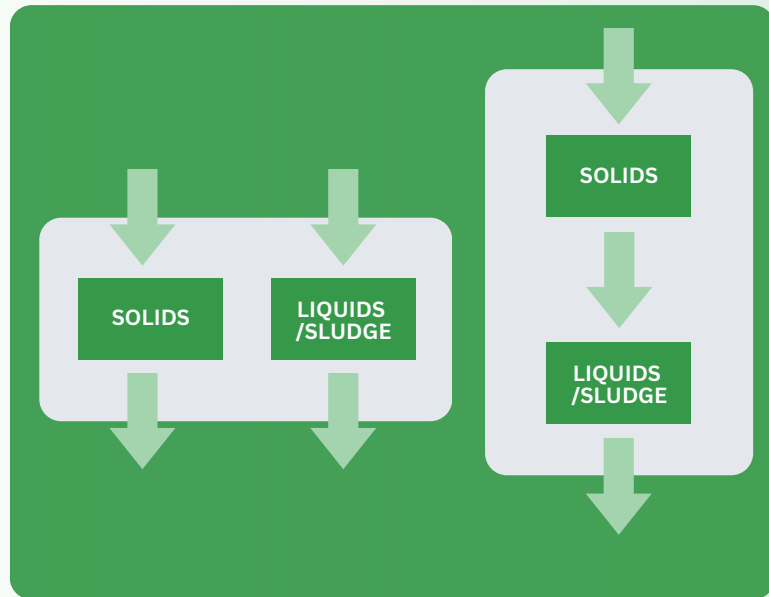
BENEFITS OF USING SAS MIST 344 ARE:

Treat any oil sludge, slops, drilling mud, drill cuttings or other oil waste

Process 5-60 tons per hour

Recover high-quality oil

- The MIST 344 system can be run in two different configurations.
- The MIST 344 can be run in a parallel configuration. The MIST 344 can treat high solids waste up to 80 tons per hour and at the same time process up to 50 tons per hour of liquid or sludge waste.
- This fully integrated process is robust, flexible and allows for the treatment of virtually any oil based waste.



The **MIST 344** capability to run in parallel and serial configuration provides the option to run the waste process in 3 modes:

1. Solids cleaning
2. Oil recovery
3. Solids cleaning & oil recovery

MICROEMULSION INJECTION & SEPARATION TECHNOLOGY

SASMIST™ 344

The **MIST 344 System** is a fully mobile solid and liquid oil waste treatment system in a 40' container. The system is the result of many years of experience in treating oil based slops and sludge using our unique SASES chemicals.

The **MIST 344 system** is robust, flexible and versatile and is built using the best engineering available and the best process proven to successfully treat oil slops and sludge.

The **MIST 344 system** is fully integrated in order to optimise chemical dosing, mixing and separation processes and provide optimum results at all times.

The entire system is self regulating and the level of automation means the **MIST 344** requires only two operators.

System Details	
Dimensions	40' x 8' x 9.5'
Processing rates high solids waste	20 tons/hr - 60 tons/hr
Processing rates low solids waste (sludge/slops)	5 - 50 tons/hr
Weight	46,000 lbs (21,000 kg)
Centrifuge RPM	3,100
Centrifuge G	2,500
Power Consumption	260 KWh
Power supply	460V / 60Hz or 380V / 50Hz
Generator compatibility	Yes
Climate control/ AC	Optional

The ability to treat almost any type of oil slops liquid or oil sludge from 5 tons per hour to 60 tons per hour provides enormous flexibility and means this **MIST 344** can handle almost any waste stream.



WWW.SASENVIRONMENT.COM